



Zhengzhou Yutong Bus Co., Ltd.
Yutong Industrial Park, Yutong Road, Guancheng District, Zhengzhou, China (PC: 450061) Tel: +86 371 6671 8999 Website: www.yutong.com E-mail: sales@yutong.com
The images may include items of optional equipment and accessories that are not installed as standard. The product is subject to technical improvement. Yutong reserves the right to change product specifications without prior notice.
All rights reserved. April, 2023 Edition.

D7
CREATE GREATER VALUE WITH UPGRADES





Sold in more than **130** countries worldwide
Annual sales exceeding **70,000** units
Vehicle lengths from **5** to **18** meters
Yutong vehicles cover **43** billion kilometers per year
Carrying **52** billion passengers per year

YUTONG

Better bus, better life

As a leading bus manufacturer, Yutong buses are everywhere where transport companies demand the best! Since 1963, Yutong has been manufacturing buses and coaches that travel many roads on the planet. Realizing a sizable sales volume in over 30 countries and regions, Yutong buses are recognized by every transport professional who looks for not only exceptional quality but also before and after-sales services, and are capable of meeting all of their requirements.

YUTONG QUALITY

Judge for yourself after the first million kilometers!

As a professional in the business of transporting people, you know better than anyone that the quality of a coach or a bus can only be truly assessed after undergoing the test of the road and time. Based on this intangible principle, we conceive and build carefully designed vehicles with the best in equipment and facilities, which meet your actual needs and are capable of improving the long-term profitability of your business.



NEWLY-UPGRADED AND CUSTOMIZED EXCLUSIVE MODELS

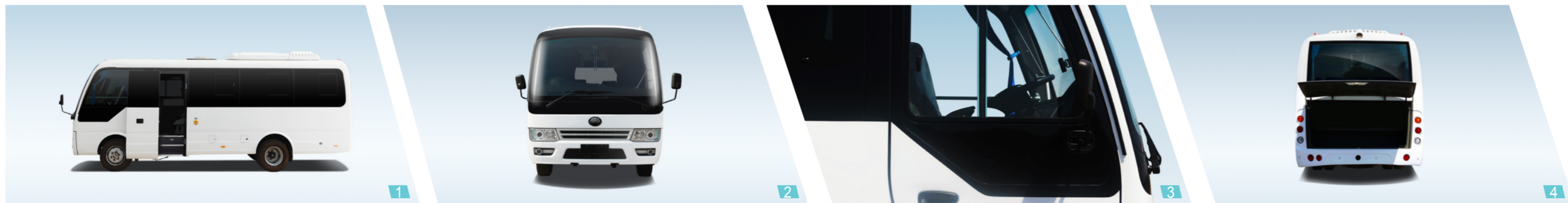
- Yutong D7 bus, as the main sales model of Yutong in the global market, has become a widely acclaimed classic model with multiple operation functions of passenger, business and travel as well as strong adaptability.
- The newly-upgraded product further strengthens such four advantages as safety and reliability, comfortable driving, convenient maintenance and repair, and strong adaptability, which makes the operation more worry-free. At the same time, the product is divided into left/right rudder, single/double door, diesel version CNG version, there are 25+1/27+1/24+1 (bus) seat layout options, seat models, fabrics and materials are flexible custom-made. You can also choose a variety of configurations such as refrigerator, air conditioner, TV, etc. according to operation requirements so that Yutong can truly tailor-make exclusive models for you and create more value for you!



BEAUTIFUL & PRACTICAL FOR CLASSIC STYLE

Following the classic style, it is simple and graceful when stationary, while dynamic and elegant when driving. Beautiful and practical, showing Yutong's design aesthetics.

- 1 With classic style, the waistline of bus is round, elegant, smart and modern;
- 2 The aerodynamic design principle is adopted to reduce wind resistance and energy consumption;
- 3 Left and right rudders, single and double doors are optional to meet customized needs;
- 4 The large loading capacity of the backup compartment easily accommodates more luggage.



SPACIOUS & TIDY FOR BETTER RIDE EXPERIENCE

From the layout of interior space structure, to the seat design, to the simple business color design, everything is people-oriented to create a comfortable riding experience for passengers.

- 1** The width of the vehicle is 2,240mm, the height of the compartment is 1,900mm, the passenger space is spacious, and there is no sense of depression;
- 2** (Optional) Business gray style interior with strip light configuration takes into account both lighting and interior atmosphere effects, creating a comfortable environment;
- 3** (Optional) The seat USB charging interface is optional to meet the charging needs of each passenger;
- 4** (Optional) Single and double side luggage racks provide sufficient storage space for passengers;



CONVENIENT & RELIABLE

FOR METICULOUS CARE

"Make driving easier" is the demand of all bus drivers. Yutong D7 greatly improves the stability of vehicle handling and driving safety through precise vehicle tuning, while allowing drivers to ride more comfortably and make steering and shifting easier thus so that driving Yutong buses is truly a pleasure.



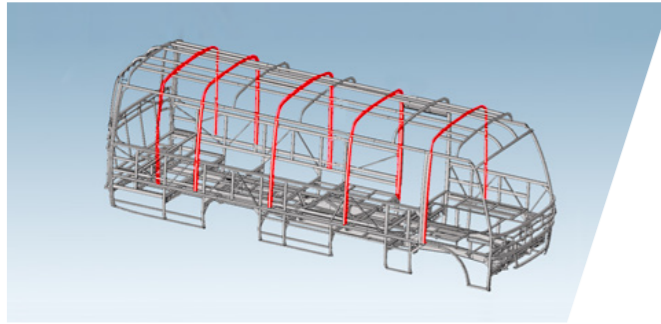
Eaton gearbox is adopted, which has the leading shifting portability;

The new instrument panel with more beautiful design is used, and the position of control switch of the instrument panel is more ergonomic;

There are many storage spaces in different forms in the driving area, which is convenient for the driver to place small items, bills, drinking glasses, etc.;

SAFE AND RELIABLE

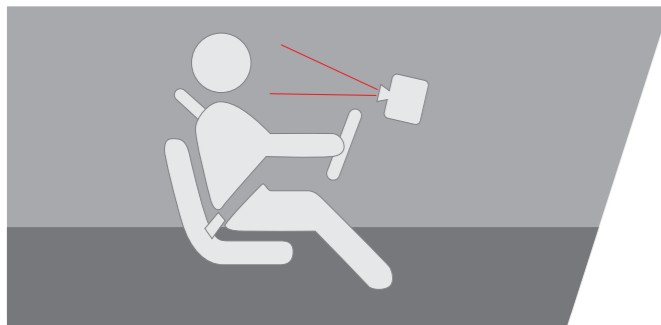
Customer value: the product safety degree is high, the vehicle is reliable and durable that reduces the shutdown risk to the greatest extent and saves the operation cost.



- Diamond ring high-strength steel skeleton body is adopted, which is safer than stamped body. When the vehicle collides (whether frontal or side collision), the body deformation is small, which effectively protects the safety of drivers and passengers in the vehicle;



- Yutong has the world's largest vehicle electrophoresis production line, equipment imported from Germany and more than 8 years of vehicle anti-corrosion commitment;



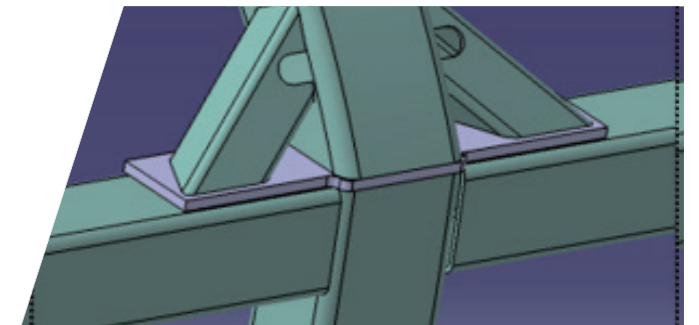
- The steering stability is greatly improved, and the vehicle driving safety is increased;



- The retarder or exhaust brake auxiliary brake configuration improves long-slope braking safety and reduces brake pad wear in bus working conditions;



- Cummins engine + Eaton gearbox. International brand power assembly can improve the reliability and durability of the power system;



- High-stress material leaf spring is used to improve the reliability and service life of leaf spring;

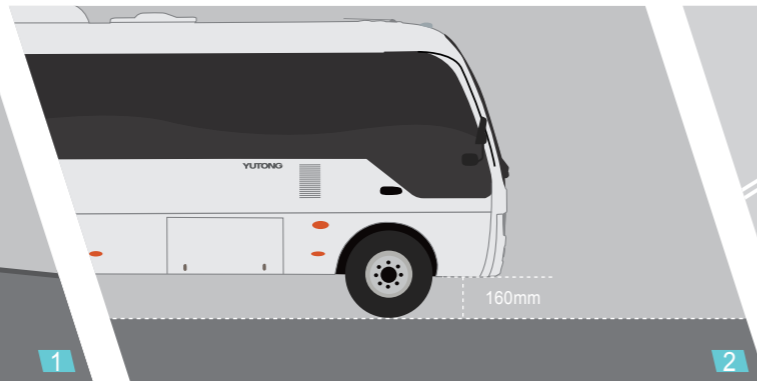


STRONG ADAPTABILITY

Customer value: good passability, adapt to different road conditions and long mileage.



- 1 The approach angle/departure angle is increased to $18^{\circ}/12^{\circ}$, with improved passability and ability to adapt to complex road conditions;
- 2 Minimum ground clearance is 160mm;
- 3 Minimum turning radius is 8m;
- 4 The fuel tank is increased from 90L to 120L, and the theoretical maximum cruising range is more than 500 km.



REPAIR AND MAINTENANCE ARE CONVENIENT

Customer value: repair and maintenance are more convenient, saving time and cost.



For power assembly such as engine, gearbox and axle with high maintenance frequency, a large access hole is designed in the corresponding position to improve the convenience of maintenance.



Front axle disc brake and brake pads are featured by convenient maintenance and repair;



Split rear light fixture is featured by convenient repair and low cost;



WELL-ESTABLISHED SERVICE NETWORK

- Over 200 chartered service companies and more than 320 service outlets;
- Service engineers and spare parts managers are available in local areas;
- Established a number of overseas parts center in Russia, Venezuela, Panama, South Africa, Australia, UAE, etc.
- Signed joint service agreements with world-renowned suppliers Like DAF, Cummins, ZF, and Meritor to jointly provide service for Yutong vehicles together with them.

OSN PLATFORM

- The OSN platform creates a service information supporting system, greatly improving the efficiency of services.

SERVICE CAMPAIGNS

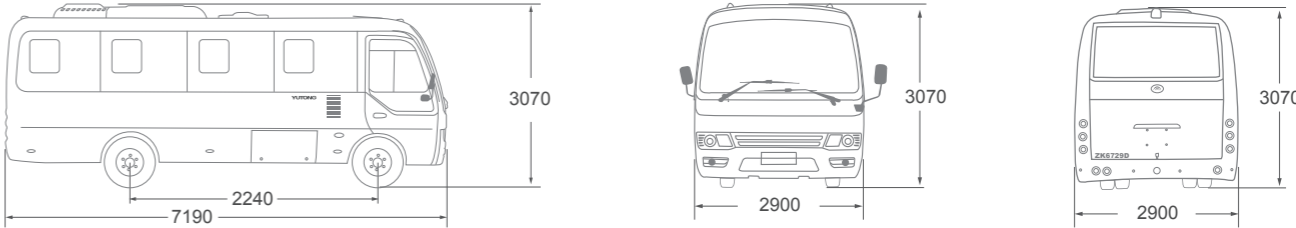
- Carried out service campaigns in Sudan, Tanzania, Venezuela, Hong Kong and so on and provided customers with thoughtful service including free comprehensive vehicle inspection, tackle vehicle problems when detected, provide customers with free maintenance parts, etc.

SYSTEMATIC SERVICE TRAINING

- Set up training center in Zhengzhou, Venezuela and Philippines, and the training center in Zhengzhou is the first one in China' s bus industry who provided technical training for overseas customers;
- Developed training materials in different languages, covering repair and maintenance of vehicles, instructions for drivers, management manual of service station, etc.

D7

CREATE GREATER VALUE WITH UPGRADES



ITEM	STANDARD
Overall length*width*height	7,190*2,240*2,900/3,070 (air conditioning)
Wheelbase	3,935mm
Maximum total mass	8,100kg/8,500kg (bus, gas)
Angle of Approach/Departure	18°/12°
Control	Left/right rudder
Passenger door	Single/double door
Engine type	ISF3.8s3154/ ISF3.8s4154/ ISF3.8s5154
Rated power (kw/rpm)	115/2,600
Rated torque (Nm/rpm)	500/1,200-1,900
Gearbox	Eaton (optional Fast) 6 speed manual box
Clutch	SACHS push clutch
Maximum gradeability	35%
Displacement (L)	3.76
Emission	Euro III, Euro IV, Euro V
Fuel tank capacity (L)	120
Fuel type	Diesel/CNG (Yuchai)
Axle	Front axle 3.5T disc type, rear axle 6T drum type
Steering	Hydraulic power steering
Suspension	Leaf spring
Tire	235/75R17.5
Braking safety	ABS
Auxiliary braking	Eddy current retarder/exhaust brake
Air conditioning	16,000kcal/h
Number of seats	25+1/27+1/24+1 (Bus)

Seats layout

