



Zhengzhou Yutong Bus Co., Ltd.
Yutong Industrial Park, Yutong Road, Guancheng District, Zhengzhou, China (PC: 450061) Tel: +86 371 6671 8999
Website: www.yutong.com E-mail: sales@yutong.com
Follow us on Facebook & Twitter & YouTube at Yutong Bus & Coach
The images may include items of optional equipment and accessories that are not installed as standard. The product is subject to technical improvement.
Yutong reserves the right to change product specifications without prior notice. All rights reserved. May, 2020 Edition.

TECHNOLOGY FIRST, LOW CARBON TRAVEL

YUTONG ICE12



WHO WE ARE

World's major bus and coach supplier, global top-selling bus brand

- ©4 manufacturing bases.
- ©Total plant area > 3.59 million m².
- ©Max. daily production capacity> 445 units.
- ©Max. daily production capacity of new energy bus > 375 units.
- ©5m-18m full product lineup, incl. city bus, coaches, commuters, school bus, special vehicles, etc.
- ©Successful promotion of new energy bus products over 300 cities, accumulated sale volume exceeded 130,000 units.

OUR MISSION

Create greater value for customers

- ©Save 58,919 L fuel per year.
- ©Reduce 9,290 t NO (nitric oxide) emissions per year.
- ©Reduce over 1,600,000 t carbon emissions per year.
- ©Reduce 193 t PM2.5 emissions per year.





YUTONG ICE12

TECHNOLOGY FIRST
LOW CARBON
TRAVEL

Yutong ICE12 full electric bus integrates Yutong's classic design with cutting-edge technologies. It is highly efficient, energy-saving and environmentally friendly. It provides a modern city with pure breath and sustainable green development.

OUTSTANDING APPEARANCE

The solid and concise body line outlines the outstanding body curve of Yutong ICE12 which is elegant both in moving and motionlessness.



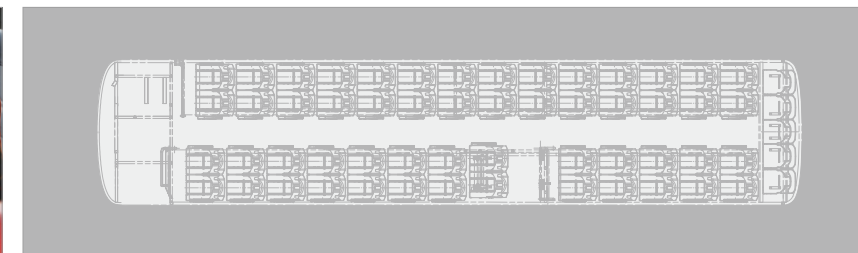
WHERE THERE IS SPACE, THERE IS A REALM

Yutong ICE12 has optimized space design thus is more ergonomic. With improved ride comfort and ultra-quiet ride experience, passengers can enjoy the tranquility along the travel.



Comfortable seats

Ergonomic design with high space utilization.



It has the most passenger seats among buses of the same length

The max. number of passenger seats is 59, with the largest number of seats among buses of the same length.



Ultra-quiet ride experience

With the ultra-quiet electric motor, ultra-quiet axle final drive and air pump, passengers can enjoy the elegant seating moment.



Dual-zone control of DC inverter electric air conditioner/flat floor design of the whole vehicle.

Temperature control is more rational and riding is smoother.



Huge luggage compartment

The space utilization is more rational and the luggage can be arranged more neatly.



Integrated appearance design

Exquisite, smooth and fashionable style.



Harmonious rear panel design

Full LED rear lights are very charming.



CORE TECHNOLOGY FOR THE FUTURE

Yutong owns the core technology ReCtrl with independent intellectual property rights and has worked out the "3S" safety standards for electric buses, namely "fire-proof, water-proof and electric shock-proof" safety standards, which has raised its safety level to the highest professional protection of IP68 and met the European standard.



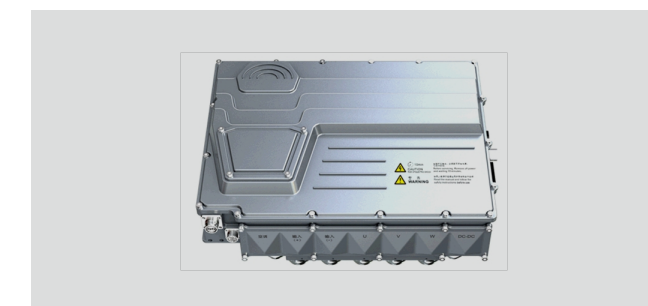
Fire-proof, water-proof and electric shock-proof

Improve the safety of buses while running in dusty areas or wades (≤ 0.3 m).



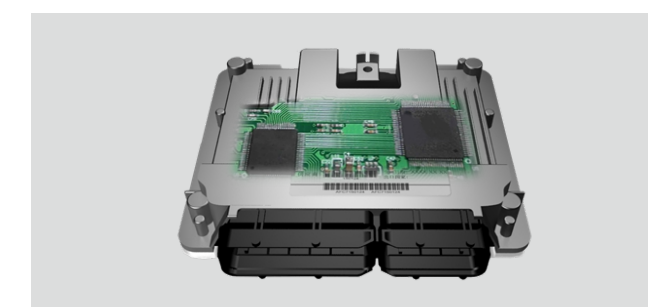
Battery with liquid cooling system

The battery has gone through a host of strict performance tests and verifications, as well as 24-hour safety monitoring, to ensure the battery does not catch fire or explode.



Integrated motor controller

With integrated design adopted, the high-voltage nodes and size are reduced by 50%, making the bus safer and more reliable.



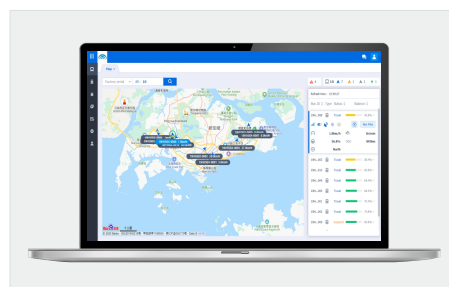
Vehicle controller

With bus status monitored in real time, bus energy managed and brake energy optimized, the service life of buses reaches up to 15 years.



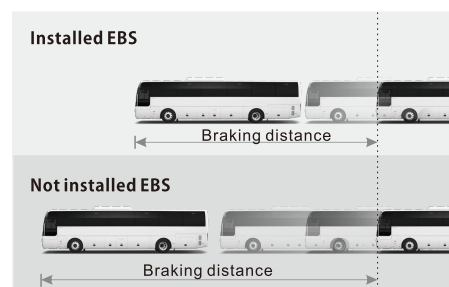
DRIVING WITH THE POWER OF INTELLIGENCE TO MEET YOUR NEEDS

Advanced intelligent auxiliary driving uses the power of science and technology to enhance the driving safety and achieve comprehensive intelligent safety guarantee thus making driving worry-free and making travel more relieved.



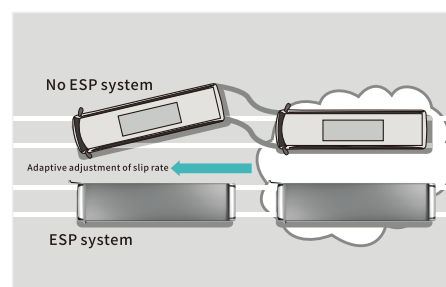
Intelligent scheduling

Combined with the operation routes, real-time road condition information and SOC information, intelligent scheduling is carried out online to formulate a rational charging and supplementary charging plan.



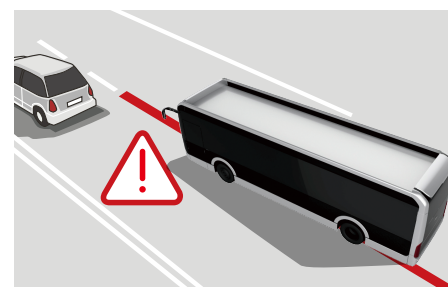
EBS

Adopt electronic brake system, the braking response is rapid, the braking force is reasonably distributed, the energy is saved effectively and the service life of the brake pad is greatly extended.



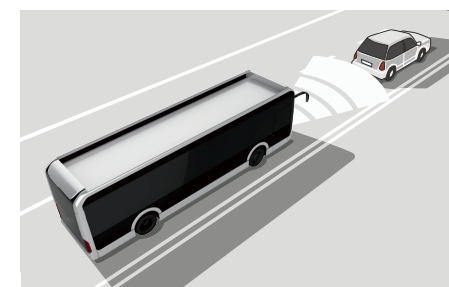
ESP

Significantly improve the stability of the body and driving safety.



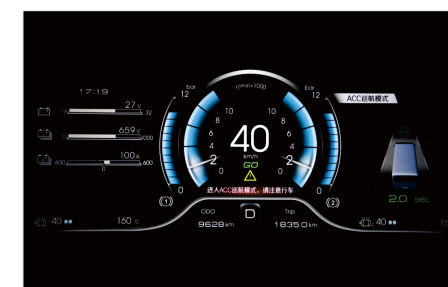
LDWS

Effectively identify the lane line and road edges to prompt the driver in time of lane departure.



AEBS

Monitor driver's behavior and obstacles in the front in real time, and conduct pre-warning before braking.



CCS

It can automatically maintain the preset speed, which can effectively relieve driver's fatigue when driving for a long time.



HIGH ENERGY REALIZES OVERALL CONTROL

Yutong ICE12 is a product with sophisticated technologies, which has raised the fluency and safety of driving control to a new height. It brings together the power of technology and ingenuity to make driving worry-free.



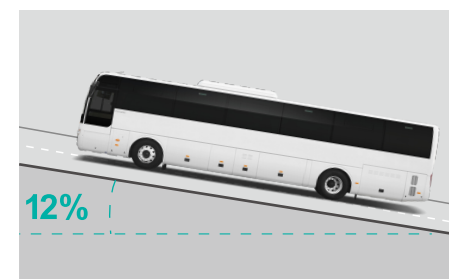
Five-star cockpit

Ergonomic design, intelligent electric power steering and pneumatically adjusted steering wheel make driving a pleasure.



Comfortable driver's seat

Equipped with comfortable air cushion backrest, the seat can be heated and rotated with airbag shock absorption function, alleviating sedentary fatigue.

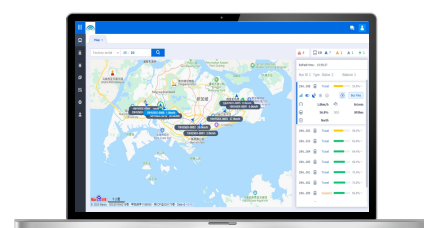


Strong power

The 0-80km/h acceleration time is only 30 seconds, and the max. speed on 9% slope road can reach 45km/h, which makes driving more conquerable.

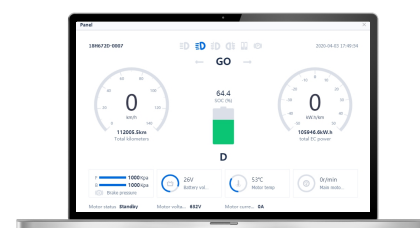
INTELLIGENT CONNECTIVITY, BETTER CONNECTION

Equipped with an intelligent connected system, Yutong ICE12 integrates information between people, vehicles and cities, improves the efficiency of operation and management, and accomplishes intelligent travel and management.



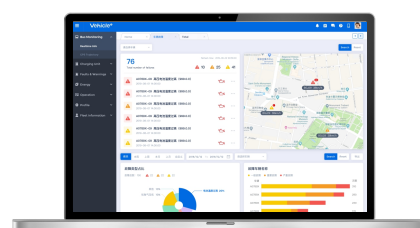
Real-time data monitoring

Real-time grasp of fleet operation, energy consumption and fault information, and timely judgment and decision on possible situations.



Energy consumption management

The real-time energy consumption level can be grasped, and the reduction of energy consumption cost can be achieved through big data analysis.



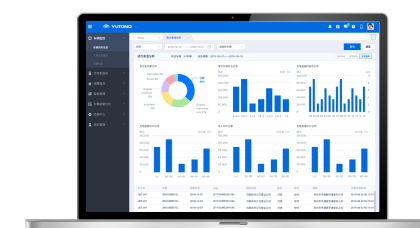
Remote fault diagnosis

Real-time grasp of fault vehicles, fault content, treatment method and other information with the purpose of arranging operation and maintenance rationally.



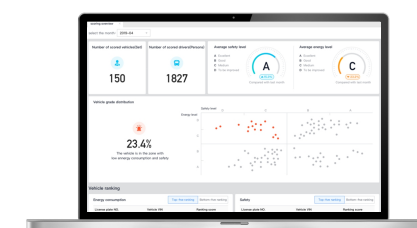
Business operation report

Big data analysis helps grasp daily/weekly/monthly operation of the fleet in terms of mileage, energy consumption and operating time.



Power battery analysis report

Grasp the usage status of power batteries, provide improvement suggestions, optimize use habits and extend battery life.



Driving behavior analysis

Assess drivers from the perspective of safety, energy saving and comfort to optimize the driving habits.



FAST AND SAFE CHARGING WITH INNOVATIVE TECHNOLOGY

Taking the future development trend of mobility into consideration, Yutong has made significant progress in the charging technology of new energy buses, and users have no worry about the whole charging process, thus creating value for green and environment-friendly travel.

◇
Chinese-standard \Euro-standard
DC charging system

250A (Chinese-standard) \200A (Euro-standard) charging current, real-time monitoring on temperature of the charging socket, and high protection level standard feature excellent safety and reliability.



Euro-standard



Chinese-standard

COZY SERVICE - SERVICE OF “DESIGNATED PERSON AT FIXED LOCATION”

©Through ten-year development, Yutong overseas service has formed seven core advantages at present.

● After-sales service policy industry leading




● Service network global market coverage

● Training system for the service provider advanced management mode in the industry

● Service information complete

● Parts guarantee system quick and efficient

● Market service team specialization



RELIABLE SERVICE

ICE12 SPECIFICATIONS CONFIGURATION

VEHICLE SPECIFICATIONS(mm)

ICE12 SPECIFICATIONS

SPECICATION	
Overall length* width* height (mm)	12465*2550*3470
Wheelbase (mm)	6350
Min. turning diameter (m)	19.6
Approach/departure angle (°)	7/8
Max. speed (km/h)	100
Electric capacity (kWh)	374.65 281.92, liquid cooling
Rated power (kW)	215
Peak power (kW)	350
Rated torque (Nm)	1200
Air conditioning (A/C)	Electric heating/cooling A/C
Max. number of passengers	61
curb weight (kg)	19400

The document is for reference only and the product is subject to the physical vehicle. Yutong reserves the right of final interpretation.