

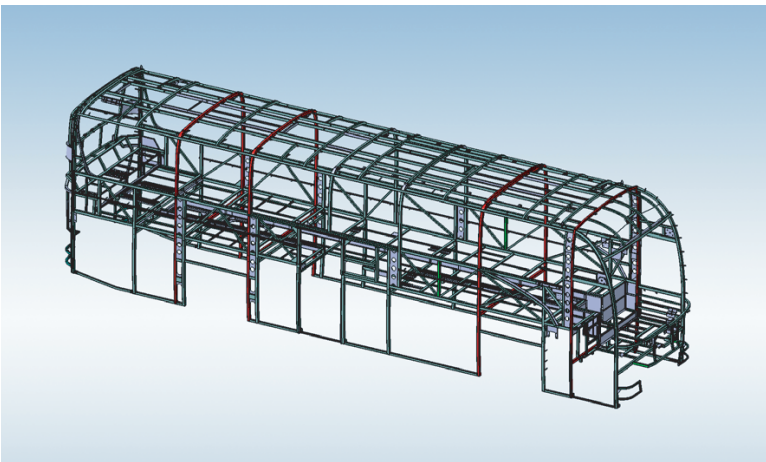
Longer Life Cycle

Under normal driving conditions, vehicle main structure features a service life of 2 million km/20 years.



High-strength steel frame

700 MPa high-strength steel (three times stronger than standard steel) plus robust closed-ring structure ensure maximum passenger protection.



Advanced anti-corrosion tech

Electrophoretic coating with >1,000 hours salt spray resistance, ensuring no rust for 8 years and no structural corrosion for 10 years.

Premium components

IP67-rated connectors from leading international suppliers such as BOSCH, AMP, Delphi, ITTDeutsch, featuring superior water and dust resistance.



Item	Specifications			Version
L*W*H (mm)	13,250*2,600*3,860 (to roof hatch)/3,960 (to AC)			-
Wheelbase (mm)	6,000+1,300			-
Front overhang (mm)	2,265			-
Rear overhang (mm)	3,685			-
Luggage compartment volume (m³)	15.5			-
Front axle/Rear axle/ Supporting axle (kg)	7,600/10,900/4,500			-
	7,500/10,500/4,500 (Tanzania)			-
Fuel tank	400L			●
	750L			○
AC	Kelin AC (32,000 kcal)			●
Tire	DOUBLE COIN: 315/ 80 R22.5			●
	Goodyear: 315/ 80 R22.5			○
	Michelin: 315/ 80 R22.5			○
Powertrain	Engine model/emission/ displacement (L)	Clutch	Transmission	
	L360 20/Euro II/8.9	Sachs MFZ430	Fast 6DSX150T	●
	ISLe375 30/Euro III/8.88	Sachs MFZ430	Fast 6DSX180T	○
	Z10E410 31/Euro III/9.92	Sachs MFZ430	Fast 6DSX200T	○
Seat layout	61+1+1			●
	75+1+1			○
	55+1+1			○
	51+1+1 (business-class seats)			○

“-”Not equipped, “●”Standard, “○”Optional



Yutong Bus Co., Ltd.
Yutong Marketing Center, Economic and Technological Development Zone, Zhengzhou, China, Tel: +86 371 6671 8999 Website: www.yutong.com E-mail: sales@yutong.com
Follow us on Facebook & Twitter & YouTube at Yutong Bus & CoachThe images may include items of optional equipment and accessories that are not installed as standard.
The product is subject to technical improvement. Yutong reserves the right to change product specifications without prior notice.All rights reserved. January, 2025 Edition.

Yutong Bus contact number	Rashid +255716888572 WhatsApp	Phillippe +255742278564 WhatsApp	Godwin +255761820000 +8618838029591 WhatsApp	Frank +255621168888 +8615038266127 WhatsApp
---------------------------	----------------------------------	-------------------------------------	--	---



Yutong D14
TIME TELLS EVERYTHING

POWERFUL PERFORMANCE WITH INTELLIGENT EFFICIENCY

fuel savings
8%-10%

©Power enhancement

Three power options available, with the top choice being Cummins Z10E410 engine (max torque **2,000 N·m**), handling varied road conditions and meeting high-load, long-distance operation needs.

©Fuel saving

Optimized powertrain with BlueCore intelligent fuel-saving system reduces fuel consumption by about **8%-10%**, delivering higher fuel efficiency and profitability for customers.



ENHANCED CAPACITY FOR INCREASED PROFITABILITY

40%
increase from the previous generation

©Increased passenger capacity

Adds 4-5 more seats than the previous generation, accommodating up to **77 passengers** to boost per-trip revenue.

©Expanded luggage compartment

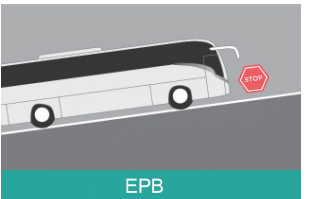
Volume increased from 11m³ to **15.5m³**, a 40% increase from the previous generation, meeting cargo needs and enhancing operational efficiency.



SAFE AND WORRY -FREE OPERATION

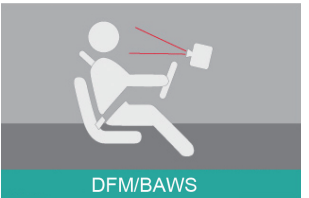
©EPB

Prevents coasting, ensures driving safety.



©Intelligent monitoring system

Captures and stores high-definition images in real-time, providing driver assistance and management support.



©ASR

Acceleration Slip Regulation (ASR) ensures the vehicle's driving force and steering capability.

