



Zhengzhou Yutong Bus Co., Ltd.
Yutong Industrial Park, Yutong Road, Guancheng District, Zhengzhou, China (PC: 450061) Tel: +86 371 6671 8999
Website: www.yutong.com E-mail: sales@yutong.com
Follow us on Facebook & Twitter & YouTube at Yutong Bus & Coach
The images may include items of optional equipment and accessories that are not installed as standard. The product is subject to technical improvement.
Yutong reserves the right to change product specifications without prior notice. All rights reserved. May, 2020 Edition.



TECHNOLOGY-EMPOWERED GREEN TRANSPORT

YUTONG E12



WHO WE ARE

World's major bus and coach supplier, global top-selling bus brand

4 manufacturing bases.

Total plant area > 3.59 million m².

Max. daily production capacity > 445 units.

Max. daily production capacity of new energy bus > 375 units.

5m-18m full product lineup, incl. city bus, coaches, commuters, school bus, special vehicles, etc.

Successful promotion of new energy bus products over 300 cities, accumulated sale volume exceeded 130,000 units.

OUR MISSION

Create greater value for customers

Save 58,919 L fuel per year.

Reduce 9,290 t NO (nitric oxide) emissions per year.

Reduce over 1,600,000 t carbon emissions per year.

Reduce 193 t PM2.5 emissions per year.





TECHNOLOGY-EMPOWERED GREEN TRANSPORT

YUTONG E12

● Following Yutong's forward-looking and innovative gene, Yutong E12 full electric bus advocates green transport for a low-carbon and beautiful city.



AESTHETIC APPEARANCE DESIGN CONSISTENT WITH URBAN STYLE

The gorgeous appearance design such as the simple and elegant shape and the streamlined body integrates urban style and industrial design, forming movable scenery in a city.



Integrated appearance design

Exquisite, smooth and fashionable style.

Classic and dazzling styling

Elegant and streamlined body with a perfect proportion.



Harmonious rear panel design

Full LED rear lights are very charming.

ERGONOMIC DESIGN WITH LARGE SPACE

Adhering to the “human-oriented” design philosophy and the spirit of pursuing perfection, we focus on details and strive to bring marvelous travel experience to passengers.



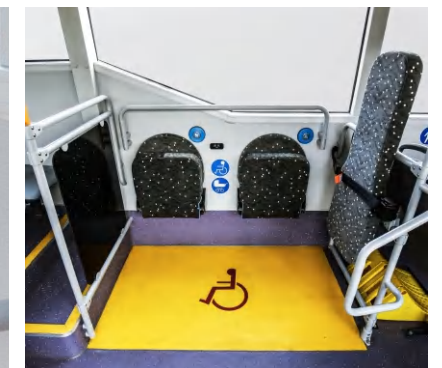
Comfortable seats

Ergonomic design with high space utilization.



Getting-off bell button/USB charging ports

Meet diversified needs of passengers.



Special area for special populations available

Handrail, guardrail and backrest design takes individual needs into consideration.





INNOVATION CHANGES DRIVING

Yutong E12 focuses on driving control experience and improves safety performance through advanced technologies.



◎ Cockpit free of disturbance

Separation door with eco-friendly materials prevents the driver from disturbance while driving.



◎ Follow-up instrument

User-friendly interface and floating buttons.



◎ Comfortable driver seat

The driver seat is provided with air cushion backrest and airbag shock absorption, and can be heated and turned, thus alleviating the sedentary fatigue of drivers.

SOPHISTICATED SAFETY TECHNOLOGY

Yutong owns the core technology ReCtrl with independent intellectual property rights and has worked out the "3S" safety standards for electric buses, namely "fire-proof, water-proof and electric shock-proof" safety standards, which has raised its safety level to the highest professional protection of IP68 and met the European standard.



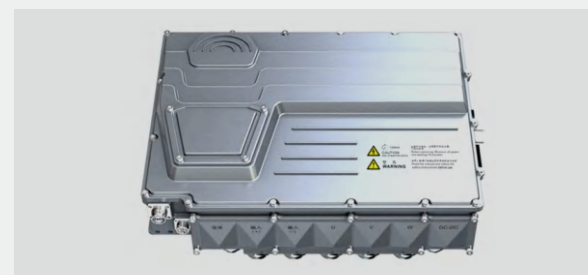
© Fire-proof, water-proof and electric shock-proof

Improve the safety of buses while running in dusty areas or wades (≤ 0.3 m).



© Battery with liquid cooling system

The battery has gone through a host of strict performance tests and verifications, as well as 24-hour safety monitoring, to ensure the battery does not catch fire or explode.



© Integrated motor controller

With integrated design adopted, the high-voltage nodes and size are reduced by 50%, making the bus safer and more reliable.



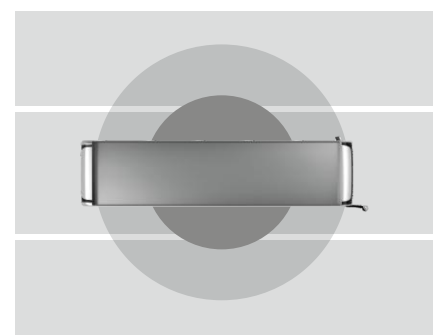
© Vehicle controller

With bus status monitored in real time, bus energy managed and brake energy optimized, the service life of buses reaches up to 15 years.



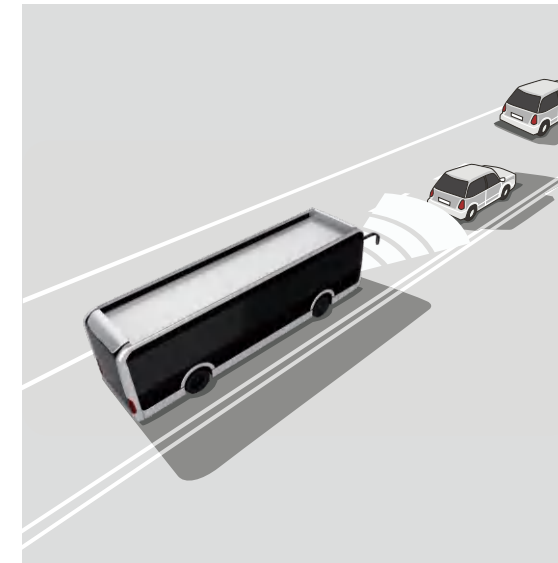
SMART AUXILIARY DRIVING ENSURES THE SAFETY

Innovative auxiliary technology is adopted for carefree driving and better life in cities.



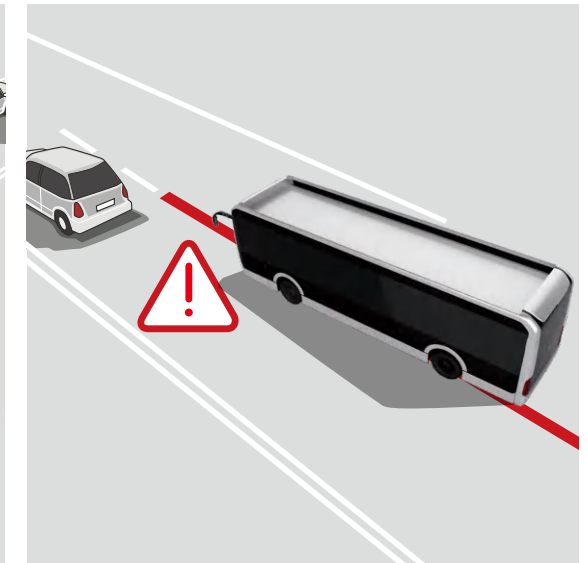
© 360° panoramic view system (optional)

4 cameras and 16 ultrasonic radars are equipped to display 360° view around the bus.



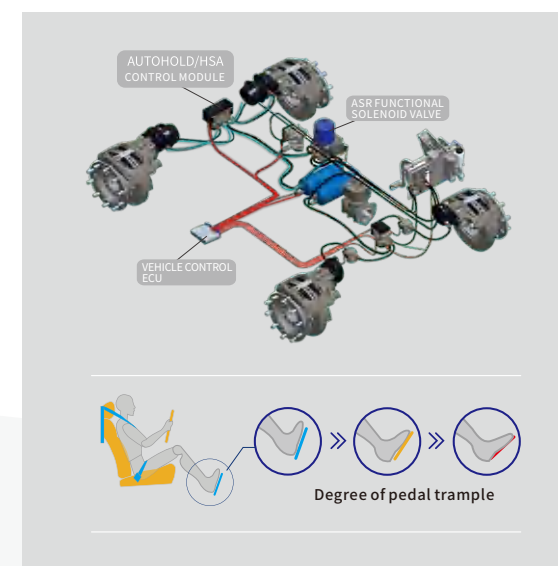
© Forward Collision Warning System

Actively identify pedestrians and vehicles in the front within 80 meters, and warn the potential collision within 2.7s.



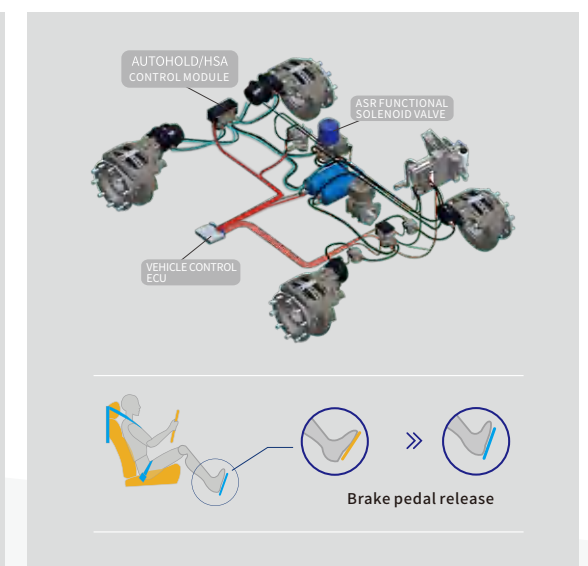
© Lane Departure Warning

Lane Departure Warning is provided as the front camera can identify lane lines and kerbs of roads.



© Brake Hold System

Hand brake operates automatically when the bus stops. Driver handbrake operation is reduced by 80%, and starting frequency of air compressor is reduced by about 20%.

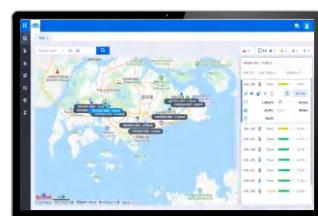


© Hill Start Assist (HSA)

HSA is applied or released according to the road slope to increase bus starting stability.

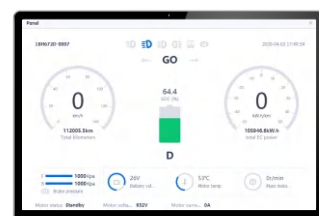
AMAZING INTELLIGENT CONNECTED TECHNOLOGY

Yutong U12 integrates modern communication and network technologies to create close information communication among bus, user, operator, road and backstage. With this technology, the management efficiency of operators is improved and the operating cost is reduced. Intelligent travel is under control.



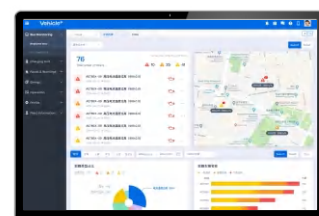
Real-time data monitoring

Real-time grasp of fleet operation, energy consumption and fault information, and timely judgment and decision on possible situations.



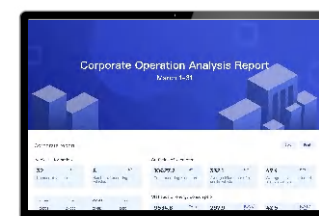
Energy consumption management

The real-time energy consumption level can be grasped, and the reduction of energy consumption cost can be achieved through big data analysis.



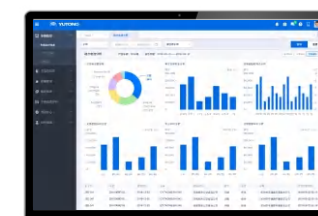
Remote fault diagnosis

Real-time grasp of fault vehicle, fault content, treatment method and other information in order to arrange operation and maintenance reasonably.



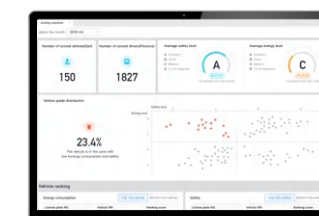
Business operation report

Big data analysis helps grasp daily/weekly/monthly operation of the fleet in terms of mileage, energy consumption and operating time.



Power battery analysis report

Grasp the usage status of power batteries, provide improvement suggestions, optimize use habits and extend battery life.



Driving behavior analysis

Assess drivers from the perspective of safety, energy saving and comfort to optimize the driving habits.



FAST AND SAFE CHARGING WITH INNOVATIVE TECHNOLOGY

Taking the future development trend of mobility into consideration, Yutong has made significant progress in the charging technology of new energy buses, and users have no worry about the whole charging process, thus creating value for green and environment-friendly travel.

● Chinese-standard \Euro-standard DC charging system

250A (Chinese-standard) \ 200A (Euro-standard) charging current, real-time monitoring on temperature of the charging socket, and high protection level standard feature excellent safety and reliability.



Euro-standard



Chinese-standard

EASY ACCESS TO REPAIR AND MAINTENANCE

Based on operators' needs, all parts and components are designed carefully for better and easier maintenance and repair.



◎ Compartment door with large opening angle

Opening angel of compartment door is over 140°, which is easy for bus inspection and maintenance.



◎ Turnable front panel

The turnable front panel facilitates the repair of lamps, defrosters and wipers.



◎ Maintenance-free out-swing battery

Provide an easy access to operation and maintenance.



COZY SERVICE - SERVICE OF “DESIGNATED PERSON AT FIXED LOCATION”

©Through ten-year development, Yutong overseas service has formed seven core advantages at present.

After-sales service policy industry leading

Service network global market coverage



Training system for the service provider advanced management mode in the industry


RELIABLE
SERVICE



Service information complete



Advanced support system

Parts guarantee system quick and efficient

Market service team specialization



E12 SPECIFICATIONS CONFIGURATION

VEHICLE SPECIFICATIONS(mm)



E12 VEHICLE SPECIFICATIONS

| SPECIFICATION | |
|------------------------------------|--------------------------|
| Overall length* width* height (mm) | 12170*2550*3300 |
| Wheelbase (mm) | 6000 |
| Min. turning diameter (m) | 19 |
| Approach/departure angle (°) | 7/7 |
| Max. speed (km/h) | 70 |
| Electric capacity(kWh) | 422.87, liquid cooling |
| Rated power (kW) | 215 |
| Peak power (kW) | 350 |
| Air conditioning (A/C) | Electric heating/cooling |
| Max. number of passengers | 61± |
| Curb weight(kg) | 14000± |

The document is for reference only and the product is subject to the physical vehicle. Yutong reserves the right of final interpretation.