



PRODUCT PROFILE



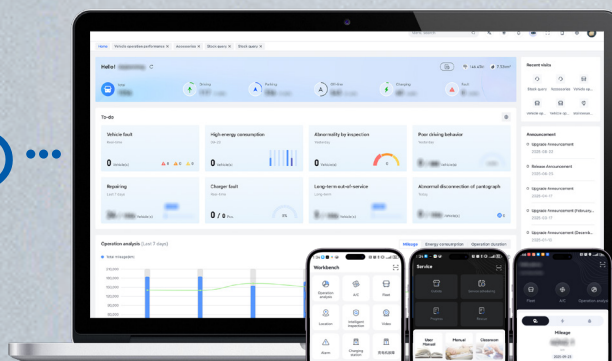
Link+ (Yutong Fleet Management) is a comprehensive intelligent management and data application platform for customer vehicles. It offers five core functions: Safety Monitoring, Intelligent Management, Driver Service, Maintenance Management and Parts Service for enterprise managers, fleet managers, drivers, service managers, and parts managers. Integrated with AI assistant, the platform provides smart tools for managing, operating, maintaining, and repairing vehicles, delivering comprehensive "safety-intelligence-efficiency" support for fleet operations. By the end of 2024, **Link+** has been operational in 112 countries, serving over 440,000 vehicles.

PRODUCT STRUCTURE

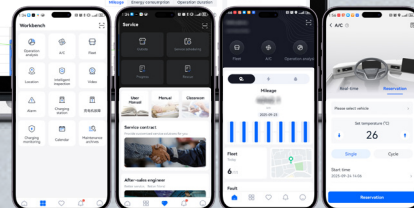
On-board Hardware



User Terminal

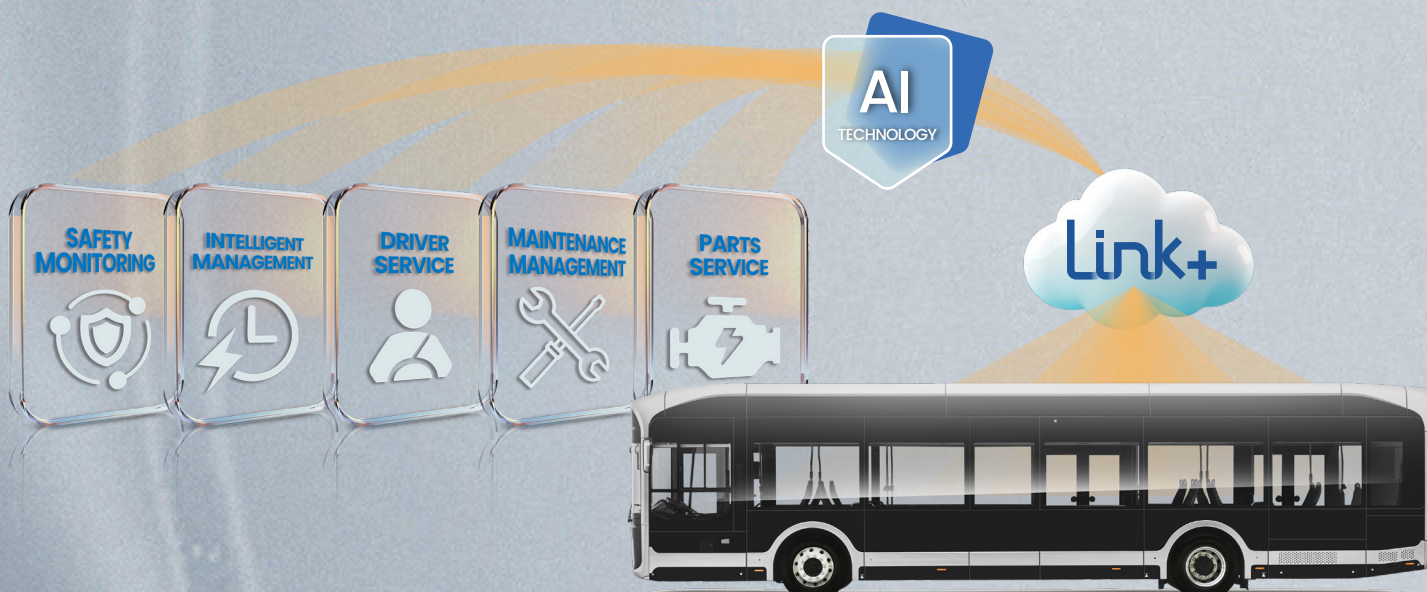


Web



APP

FIVE APPLICATION SCENARIOS + AI TECHNOLOGY



SAFETY MONITORING

Risk Monitoring

Monitor real-time operational data (speed/accelerator pedal/lights), component status (AC/motor / tire pressure), and energy consumption. Identify high / low risk vehicles, categorize them by driving / parked / charging / fault status to ensure vehicle safety.

Digital Tracking

Record critical historical data such as vehicle location, direction, speed, powertrain details (main motor RPM, current, voltage, and temperature), and speeding incidents. Provide reports and analytics to support efficient energy consumption management.

Event Subscription

Offers multiple event types, including brake air pressure, vehicle faults, prolonged idling, parking timeout, full charge, low battery capacity when entering or leaving the geo-fencing zone, speeding, rapid acceleration/deceleration, and idling with doors open. Customers can subscribe to events based on operational needs to ensure safe operations.



INTELLIGENT MANAGEMENT

A/C Control

Remotely activate/deactivate fleet or individual vehicle A/C systems on schedule, lock control panels, and preset temperature and airflow to enhance passenger comfort.

Geo-Fencing Management

Innovative geo-fencing technology allows customized zones and speed limits, providing automatic alerts (low battery/warning lights) and speed management when vehicles enter/exit defined areas. When charging within the zone, the system can automatically stop charging once the set limit is reached, preventing overcharging, conserving energy, and improving fleet safety and efficiency.

Charging Management

Integrate charging pile data to provide real-time monitoring, intelligent start-stop, and optimized charging strategies for battery electric vehicles, maximizing efficiency and cost-effectiveness.



DRIVER SERVICE

Intelligent Inspection

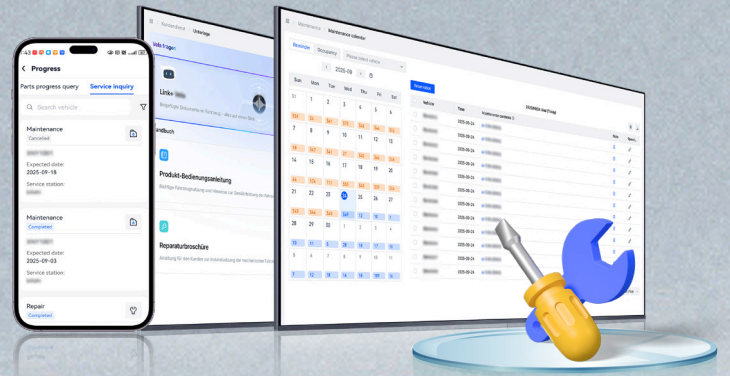
Conduct intelligent function checks and exterior checks on vehicles before and after use to ensure they are roadworthy, promoting driver safety, timely maintenance, and enhanced vehicle uptime.

Driving Behavior Management

Evaluate driver performance monthly and daily across four dimensions—economic efficiency, safety, comfort, and vehicle care—providing scientific data for energy conservation.

Driving Behavior Analysis

Precisely analyze each trip with visualized behavior charts, offering drivers objective feedback and optimization strategies.



MAINTENANCE MANAGEMENT

Maintenance Calendar

Support both Yutong standard and custom maintenance cycles with automatic reminders for scheduled upkeep.

Service Data Query

Online service data supports keyword search, cross-document search, structured catalog, quick positioning and real-time content update for efficient access.

Service Reservation and Progress Query

Schedule maintenance or repairs with one-click appointments at nearby service stations or with preferred technicians. Track progress online and rate service satisfaction.

Training Portal

Access online training materials (documents/videos) and manage internal training programs, including learning progress and exam administration.



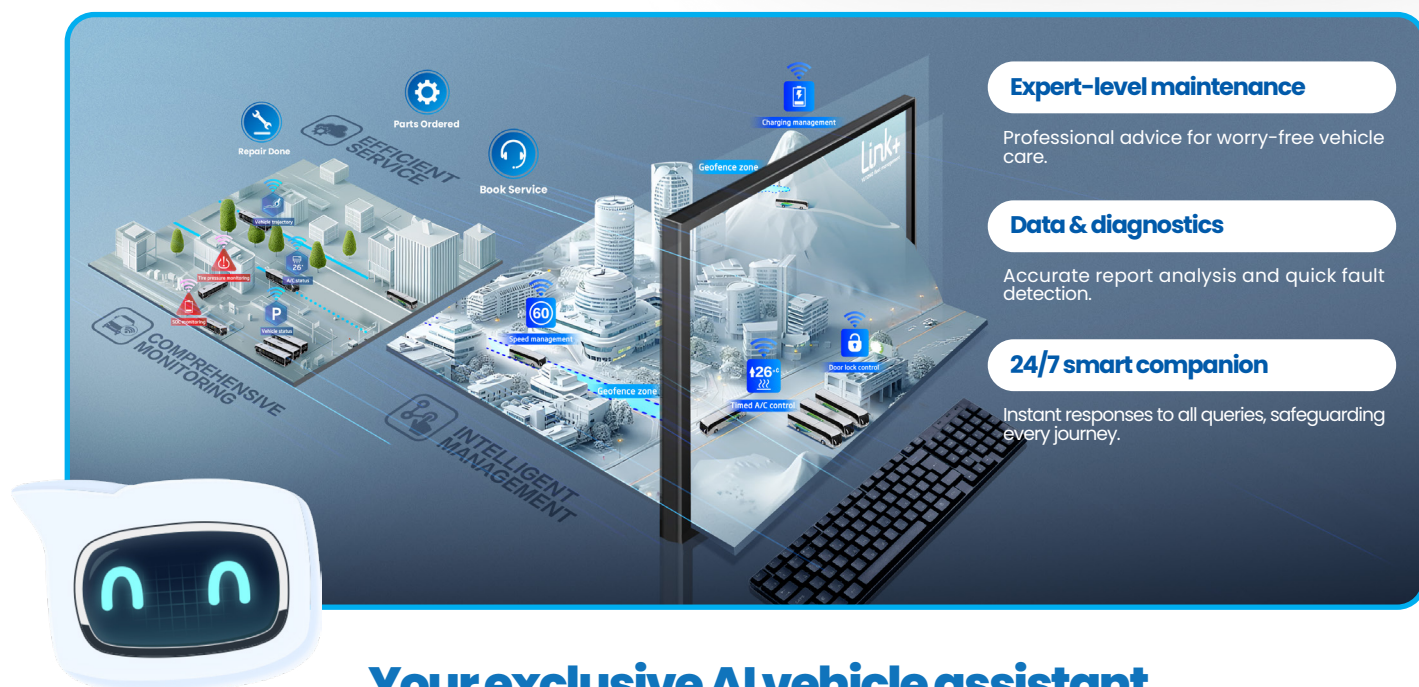
PARTS SERVICE

Parts Query

Check part details, pricing, and inventory with layered catalog browsing, part number search, or fuzzy description matching. Also support stock queries at specific service outlets.

Parts Ordering

Automatically verify, filter errors, and provide reminders based on the customer's registered vehicles. Choose specific service outlets for orders, import parts lists for bulk ordering, and track progress online—including order confirmation, preparation, shipping, port arrival, and delivery—with estimated timelines for each step.



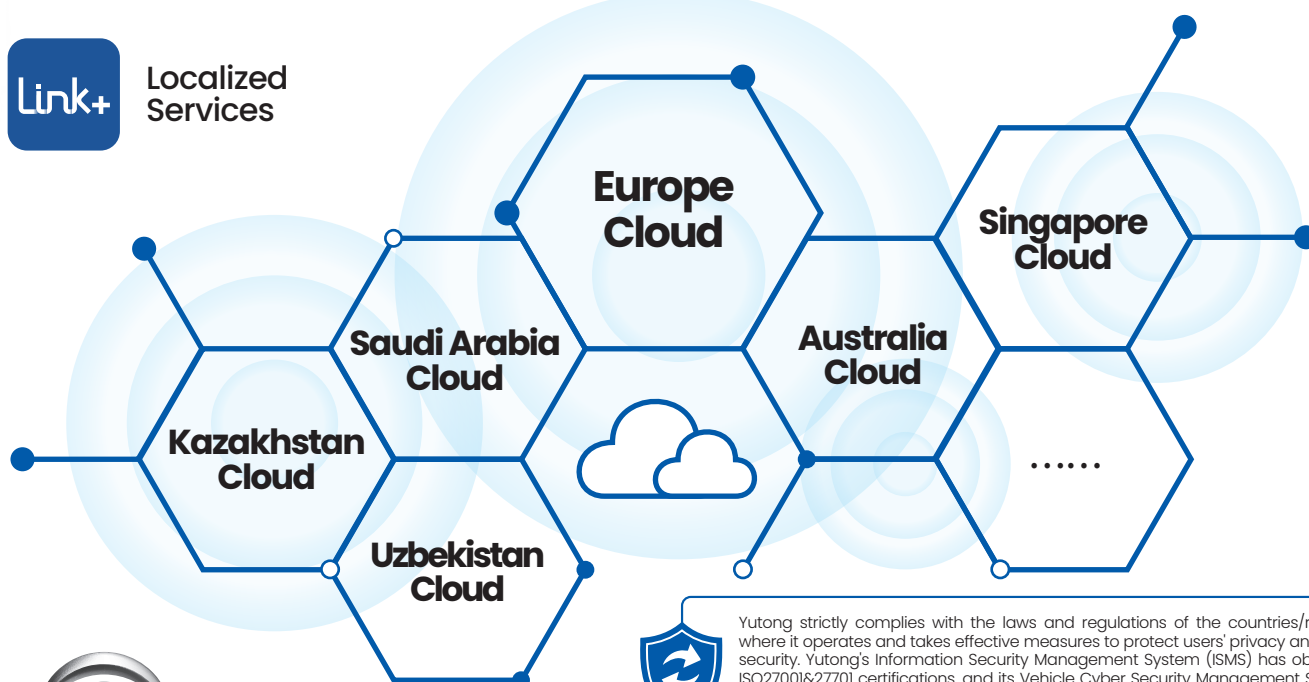
Your exclusive AI vehicle assistant
mastering the Link+ platform to ensure seamless operation

PRODUCT VERSION

Product	Applicable Model	Configuration	Core Function
Link+	New energy vehicle	Link+ Free	Outlet query, maintenance appointment, parts query/purchase, vehicle service data and online class access.
		Link+ Basic-E	On the basis of Link+ Free version, monitoring, tracking, energy consumption and open data interface are added.
		Link+ Standard-E	On the basis of Link+ Basic-E, geo-fence, vehicle inspection, driving analysis and report are added.
		Link+ Max-E	On the basis of Link+ Standard-E version, A/C remote control, charging management and user-defined report are added.
	Diesel vehicle	Link+ Free	Outlet query, maintenance appointment, parts query/purchase, vehicle service data and online class access.
		Link+ Basic-F	On the basis of Link+ Free version, map monitoring, tracking, event alarm, vehicle fault and energy consumption report are added.



Localized Services



Yutong strictly complies with the laws and regulations of the countries/regions where it operates and takes effective measures to protect users' privacy and data security. Yutong's Information Security Management System (ISMS) has obtained ISO27001&27701 certifications, and its Vehicle Cyber Security Management System (CSMS) has received EU certification. Dozens of models have passed the R155 model VTA certification for information security.



Yutong Bus Co., Ltd.

Yutong Marketing Center, Economic and Technological Development Zone, Zhengzhou, China.

Tel: +86 371 6671 8999 Website: www.yutong.com E-mail: sales@yutong.com Follow us on Facebook & Twitter & YouTube at Yutong Bus & Coach.

The images may include items of optional equipment and accessories that are not installed as standard. The product is subject to technical improvement.

Yutong reserves the right to change product specifications without prior notice. All rights reserved. September, 2025 Edition.